



PROVIDER, PATIENT, & OBSERVER PERSPECTIVES ON MENTAL HEALTH IN SEXUAL ASSAULT SERVICES

Aník Gevers

Naeemah Abrahams

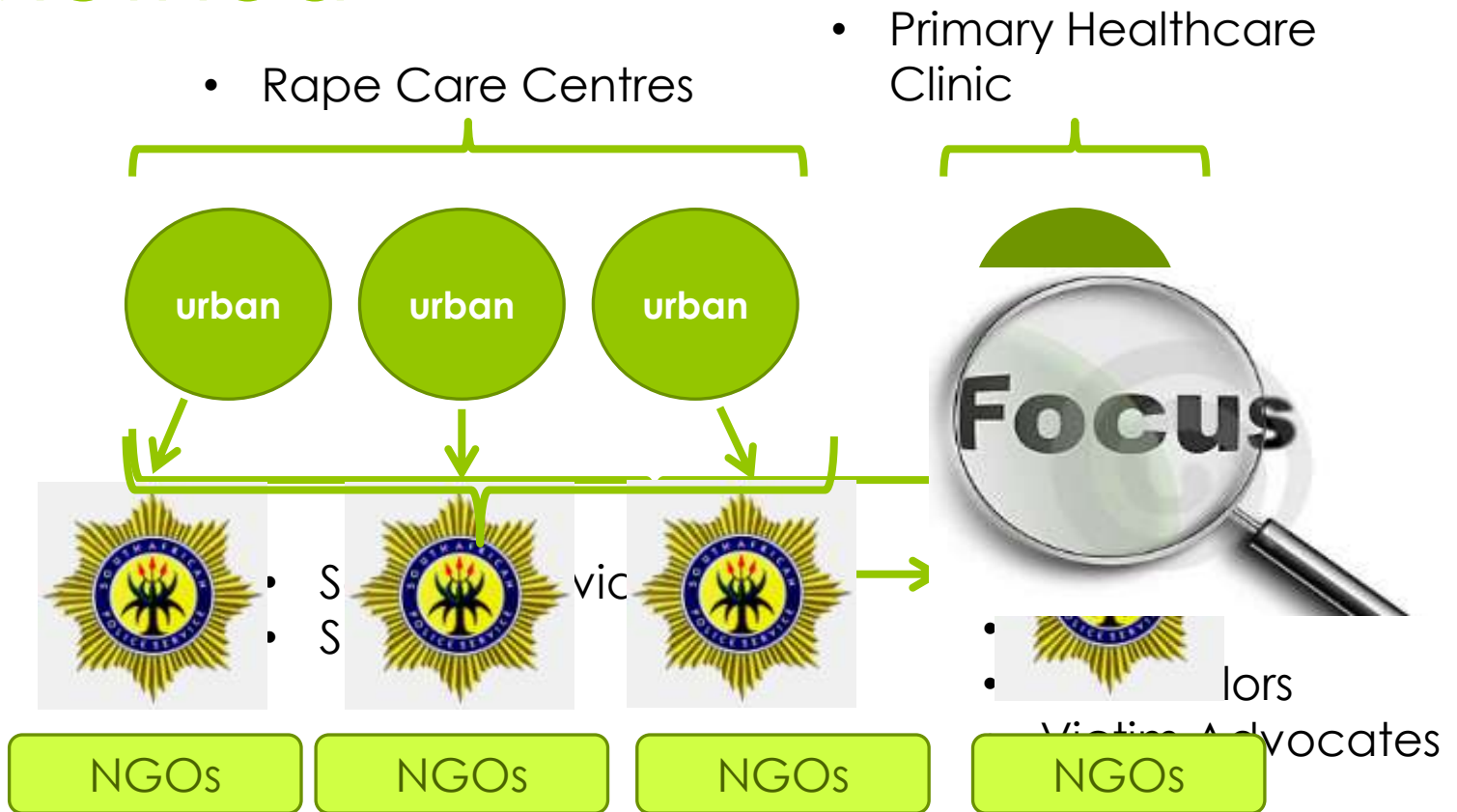
Rachel Jewkes

Development of this publication was supported in part by the HHS Centers for Disease Control and Prevention (CDC), National Center for HIV, STD, and TB Prevention (NCHSTP), Global AIDS Program (GAP) Cooperative Agreement U2G/PS001 137. Its contents are solely the responsibility of the authors and do not necessarily represent the official views of CDC.

Rationale

- Rape has a profound impact on survivors' mental health
- Early intervention can reduce or prevent severe psychological distress
- Mental health is a barrier in PEP adherence

Method



- IDI: 43 Service Providers
- IDI: 13 Survivors
- Observations at 3 clinics

SURVIVORS

- Want more support and comforting

Recommendations

- Integrate mental health support for survivors AND providers
- Improve mental health literacy
- Specialised skills for child and adolescent survivors

Questions or Comments

anik.gevers@mrc.ac.za